



JET TYER

- Clamp down or mounted
- USDA approved



Item Number	Horn Opening	Length
CHL	4" to 10½" diameter	26½"
CXHL	5" to 13½" diameter	32"



JET NET

- Each roll: 150 ft.
- USDA approved

Item Number	Size	Flat Width	Approximate Stuffing Diameter
RN14	14	2¼"	4½"
RN16	16	2½"	5"
RN18	18	2¾"	6"
RN2/22	2/22	27/64"	513/64"
RN2/22RW (Red & White)	2/22	3"	7½"
RN20	20	3"	7"
RN22	22	3¼"	8"
RN24	24	3½"	9"
RN28	28	4¼"	10" - 12" (whole beef ribs)

PLASTIC ROAST TYER

For use with #RN2/22 netting



PRT5410	18¼" x 4¼"
---------	------------

- Stainless steel
- Black plastic handle

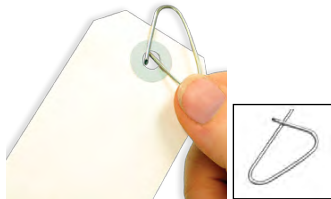
ROAST BEEF TYER



S12E	12"
------	-----

TAG FASTENERS

- Deadlock tag fasteners
- Approximately 500 pieces per lb



TF4401	1 lb.
--------	-------

I.D./SHIPPING TAG

- Plain white with metal eyelet
- Waterproof
- Size: 2¾" x 1¾"



CT1W	1 Box (1000) Tags
------	-------------------

UTILITY RING KNIVES

- Quick release
- Safety plastic
- 12 pack



Item Number	Description	Color
TKQRS	Fits Ring Sizes 8-11	Red
TKQRM	Fits Ring Sizes 12-15	Green
TKQRL	Fits Ring Sizes 16 & Up	Blue



TWINE

2 lb. cone

Item Number	Description	Length
TW9	Semi-Synthetic	2016 Ft.
TW16	Cotton, 16 Ply	2400 Ft.
TW16RW	Cotton, 16 Ply (Red & White)	2390 Ft.
TW24	Cotton, 24 Ply	1600 Ft.

POULTRY LOOPS



Item Number	Description	Quantity
PPL2	2", Polyester	1000 per box
PPL4	4", Polyester	1000 per box

KLEVER KUTTER

- Dual-sided cutter
- Stainless steel blade
- Dishwasher safe



Item Number	Dimensions	Color
KK401BL	4½" x 1½" x ¼"	Blue
KK401RD	4½" x 1½" x ¼"	Red
KK401YL	4½" x 1½" x ¼"	Yellow