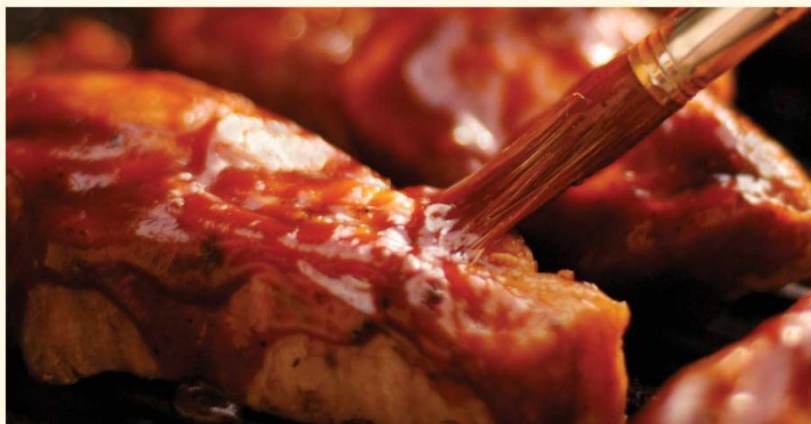


# SAUCES / MARINADES / SHISH KABOB SKEWERS



## THICK MARINADE SAUCE

Ingredients: Water, High Fructose Corn Syrup, Unsalted Tomato Paste, Salt, Corn Starch, Onion, Hickory Flavored Liquid Smoke (water, natural hickory smoke concentrate), Distilled Vinegar, Guar Gum, Chili Powder, Citric Acid, Sodium Benzoate added as a preservative, Red #40

CCTM5 ..... 5 gallon poly pail



## POLYNESIAN STYLE SWEET 'N SOUR SAUCE

Ingredients: Water, Sugar, Tomato Paste, Salt, Modified Food Starch, Acetic Acid, Soy Oil, Liquid Smoke Flavor (water, natural hickory smoke concentrate), Prepared Mustard (distilled vinegar, water, mustard seed, salt, turmeric, spices), Worcestershire Sauce ([distilled vinegar, molasses, corn syrup, salt, caramel color, garlic powder, sugar, spices, tamarind, natural flavor, sulfating agents], maltodextrin, silicon dioxide), spices, Guar Gum, Caramel Color, Garlic Powder, Onion Powder, Citric Acid, Xanthan Gum, Sodium Benzoate, Beet Powder, Potassium Sorbate

SNS1 ..... 1 gallon poly jug  
 SNS4 ..... 1 case (4-1 gallon jugs)



## TERIYAKI MARINADE SAUCE

Ingredients: Water, Sugar, Soy Sauce (water, wheat, soybeans, salt), Brown Sugar, Molasses, Food Starch-modified, contains less than 2% of Hydrolyzed Soy Proteins, spices, Citric Acid, Garlic\*, Sodium Benzoate (a preservative), Caramel Color

\*Dehydrated  
 Contains: Soybean, Wheat

TS1 ..... 1 gallon poly jug  
 TS4 ..... 1 case (4-1 gallon jugs)

## SHISH KABOB SKEWERS

Shish kabobs are always popular for quick and easy barbecues. Did you know that soaking the skewers in water for 20 minutes before using can help prevent burning and splintering?

**WOOD (4½" LENGTH)** 500 PER CASE  
 SK45 ..... 1 case (bulk pack)

**WOOD (5½" LENGTH)** 500 PER CASE  
 SK55 ..... 1 case (bulk pack)

**BAMBOO (9" LENGTH)** 1600 PER CASE  
 BAM16 ..... 1 case (16/100 packs)

**WOOD (10" LENGTH)** 1500 PER CASE  
 SK1074 ..... 1 case (3/500 packs)

