

SAUCES / MARINADES

LEMON-GARLIC MARINADE SAUCE



Ingredients: Water, White Wine Vinegar, Salt, spices, Lemon Juice Concentrate, Onion Powder, Garlic Powder, Guar Gum, Xanthan Gum, Pectin, Dehydrated Onion

LGS1 1 gallon poly jug
LGS4 1 case (4-1 gallon)

Available for retail. See page 17.



HONEY TERIYAKI SAUCE



Ingredients: Water, Evaporated Sugar Cane Juice, Soy Sauce (water, wheat, soybeans, salt), Honey, Brown Sugar, Molasses, Cornstarch, Citric Acid, Garlic Powder, spices

Contains: Wheat, Soybeans

HTE1 1 gallon poly jug
HTE4 1 case (4-1 gallon)

Available for retail. See page 17.



MESQUITE BARBECUE SAUCE



Ingredients: Water, Honey, Unsalted Tomato Paste, Molasses, Corn Starch, Hickory Smoke Flavor (water, natural hickory smoke concentrate), Salt, Distilled Vinegar, spices, Granulated Onion

MEBBQ1 1 gallon poly jug
MEBBQ4 1 case (4-1 gallon)

Available for retail. See page 17.



BAJA LEMON PEPPER MARINADE SAUCE



Ingredients: Soybean Oil, Water, Red Wine Vinegar, Salt, Black Pepper, Garlic, Dehydrated Bell Pepper Flakes, Dehydrated Onion, Xanthan Gum, Lemon Juice Concentrate

BAJA1 1 gallon poly jug
BAJA4 1 case (4-1 gallon)

BLACK PEPPER PREMIUM SAUCE



Ingredients: Water, Soy Sauce (water, soybeans, wheat, salt), Sugar, Red Soybean Paste (cultured white rice, organically grown whole soybeans, water, sea salt), Modified Food Starch, Salt, Black Pepper, Natural Flavor Oyster Sauce (maltodextrin, soy sauce [soybeans, wheat, salt], oyster extract, water, clam extract, brown sugar, autolyzed yeast extract, scallop extract, corn syrup, salt, molasses, natural flavors, modified food starch), Garlic, Acetic Acid, Autolyzed Yeast Extract, Caramel Color, Chili Powder, Natural Garlic Flavor (glycerine, natural flavors, corn syrup, water, hydrolyzed pork gelatin, ethyl alcohol, caramel color), Natural Ginger Flavor (partially hydrogenated soybean oil, natural flavors), Mirin

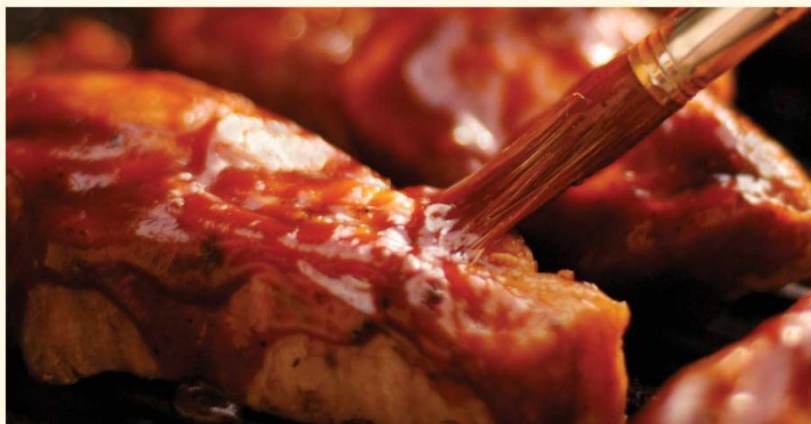
Contains: Wheat, Soybeans, Oyster, Clam, Scallop

BPS1 1-9.1 lb. poly jug
BPS4 1 case (4-9.1 lb. jugs)

Available for retail. See page 17.



SAUCES / MARINADES / SHISH KABOB SKEWERS



THICK MARINADE SAUCE

Ingredients: Water, High Fructose Corn Syrup, Unsalted Tomato Paste, Salt, Corn Starch, Onion, Hickory Flavored Liquid Smoke (water, natural hickory smoke concentrate), Distilled Vinegar, Guar Gum, Chili Powder, Citric Acid, Sodium Benzoate added as a preservative, Red #40

CCTM5 5 gallon poly pail



POLYNESIAN STYLE SWEET 'N SOUR SAUCE

Ingredients: Water, Sugar, Tomato Paste, Salt, Modified Food Starch, Acetic Acid, Soy Oil, Liquid Smoke Flavor (water, natural hickory smoke concentrate), Prepared Mustard (distilled vinegar, water, mustard seed, salt, turmeric, spices), Worcestershire Sauce ([distilled vinegar, molasses, corn syrup, salt, caramel color, garlic powder, sugar, spices, tamarind, natural flavor, sulfating agents], maltodextrin, silicon dioxide), spices, Guar Gum, Caramel Color, Garlic Powder, Onion Powder, Citric Acid, Xanthan Gum, Sodium Benzoate, Beet Powder, Potassium Sorbate

SNS1 1 gallon poly jug
 SNS4 1 case (4-1 gallon jugs)



TERIYAKI MARINADE SAUCE

Ingredients: Water, Sugar, Soy Sauce (water, wheat, soybeans, salt), Brown Sugar, Molasses, Food Starch-modified, contains less than 2% of Hydrolyzed Soy Proteins, spices, Citric Acid, Garlic*, Sodium Benzoate (a preservative), Caramel Color

*Dehydrated
 Contains: Soybean, Wheat

TS1 1 gallon poly jug
 TS4 1 case (4-1 gallon jugs)

SHISH KABOB SKEWERS

Shish kabobs are always popular for quick and easy barbecues. Did you know that soaking the skewers in water for 20 minutes before using can help prevent burning and splintering?

WOOD (4½" LENGTH) 500 PER CASE
 SK45 1 case (bulk pack)

WOOD (5½" LENGTH) 500 PER CASE
 SK55 1 case (bulk pack)

BAMBOO (9" LENGTH) 1600 PER CASE
 BAM16 1 case (16/100 packs)

WOOD (10" LENGTH) 1500 PER CASE
 SK1074 1 case (3/500 packs)

