

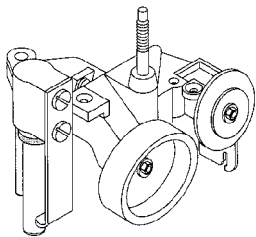
SLICER PARTS/WORKTABLES

REPLACEMENT PARTS FOR BERKEL SLICING MACHINES

FOR USE WITH

 SLICING MACHINES

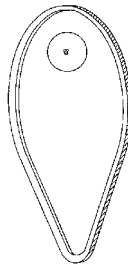
US91
 Sharpener
 Sub Assembly



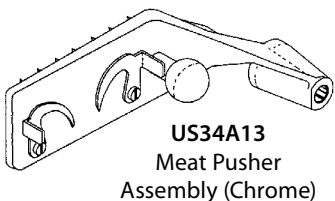
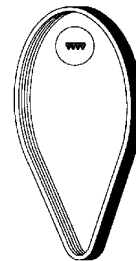
US80
 Sharpener
 Cover Knob



US1015
 Knife Pulley
 Belt
 22" x 3/16"

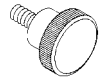


US119
 Knife Pulley
 Belt
 22" x 3/8"

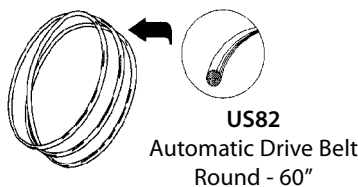


US34A13
 Meat Pusher
 Assembly (Chrome)

US0456
 Knob

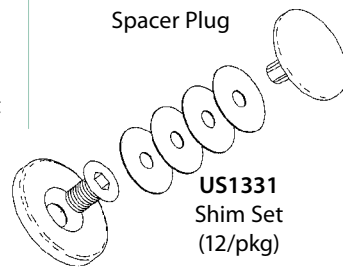


US81
 Shaft Spring

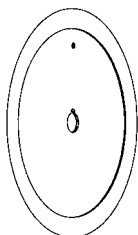


US82
 Automatic Drive Belt
 Round - 60"

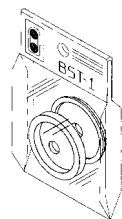
US1424
 Spacer Plug



BSK1
 Slicer Knife
 Stainless Steel
 12 1/2" Diameter



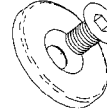
BST1
 Sharpener
 Stones



US20A107
 Knife Washer &
 Screw Assembly - N/S



US1331
 Shim Set
 (12/pkg)



Item Number	Description
US91	Sharpener Sub Assembly
US80	Sharpener Cover Knob
US1015	Knife Pulley Belt
US119	Knife Pulley Belt
US34A13	Meat Pusher Assembly
US0456	Knob
US81	Shaft Spring
US82	Automatic Drive Belt - Round Polyurethane
BSK1	Slicer Knife, Stainless Steel
BST1	Sharpener Stones, Set
US1424	Spacer Plug
US20A107	Knife Washer & Screw Assembly - N/S
US1331	Shim Set (12/pkg)

FITS MODELS					
807	808	817	818	909	919
X	X	X	X	X	X
X	X	X	X	-	-
-	X	-	X	-	-
-	-	-	-	X	X
X	X	X	X	X	X
-	X	-	X	X	X
X	X	X	X	X	X
X	X	X	X	X	X
-	X	-	X	-	-
-	X	-	X	-	-
-	X	-	X	-	-

UTILITY WORKTABLES

Accessories available when ordering: White poly top, backsplash, upper shelf, pot rack and heavy duty locking casters. Enclosed tables with sliding doors available. Custom tables for your specific needs built to order. Please call for details.

STAINLESS STEEL TOP WITH STAINLESS STEEL LEGS AND UNDERSHELF

All stainless steel construction. Heliarc welded for strong, clean joints. Top is 16 gauge with rolled edges. Base is constructed of 1 1/2" round legs with adjustable internal feet. Standard 30" wide, 34" high, 4 or 6 legs as required. Choice of open base or with undershelf.

OPEN BASE

- SST4830 48" Long
- SST6030 60" Long
- SST7230 72" Long
- SST9630 96" Long
- SST12030 .. 120" Long



WITH UNDERSHELF

- SST4830S 48" Long
- SST6030S 60" Long
- SST7230S 72" Long
- SST9630S 96" Long
- SST12030S .. 120" Long



STAINLESS STEEL TOP WITH GALVANIZED LEGS AND UNDERSHELF

- Standard 30" wide, 35" high with adjustable bullet feet
- Shipped knocked down
- Easy to assemble

- ESS4830S ... 48" Long
- ESS6030S ... 60" Long
- ESS7230S ... 72" Long
- ESS9630S ... 96" Long

