

## PAPER CUTTERS

Can be table mounted or hung under counter

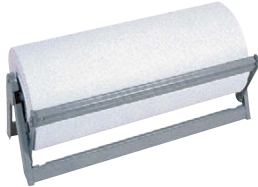


Use with 18" wide paper.

PC18 ..... Paper Cutter

## ECONOMY PAPER CUTTERS

Can be mounted on wall, countertop or under counter.



50018 ..... For 18" wide paper

## STAINLESS STEEL PAPER CUTTERS

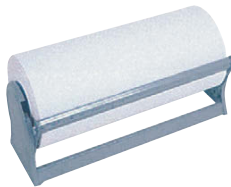
All stainless steel construction. This cutter was specially designed for use in food processing, fast food, meat, poultry and other markets where rust-free, sanitary dispensing is desired. Can be mounted on wall, counter top or under counter.



SS50218 ..... Paper Cutter for 18" wide paper  
SS50224 ..... Paper Cutter for 24" wide paper

## DELUXE PAPER CUTTERS

Features solid end brackets for added strength. Can be mounted on wall, countertop or under counter.



A52015 ..... 15"  
A52018 ..... 18"  
A52020 ..... 20"  
A52024 ..... 24"  
A52030 ..... 30"  
A52036 ..... 36"

## FILM/FOIL CUTTERS

Features serrated blades. Same solid construction as A520 series above.

A52718 ..... Film/Foil Cutter for 18" width roll

## FAT ANALYZER

Measures the fat content of ground beef. A fast and simple way used by supermarkets to accurately label their ground beef and comply with USDA standards. It features a 3 minute cycle time and works on standard electric current, (115/60/1). Comes complete and ready to use with carrying case, glass vials, cord and plug.



Overall Dimensions: 5½" x 5½" x 5½"

FA73 ..... Fat Analyzer

## REPLACEMENT PARTS

FACA1 ..... Cartridge Assembly  
FAV1 ..... 1 pk. (3) glass vials

## GUMMED TAPE DISPENSER

- Handles gummed tape up to 1½" wide
- Feed stop screw can be loosened to adjust measuring dial



404 ..... "Tape Shooter" Lever Operated Dispenser

## REPLACEMENT BRUSH



BR404 ..... Brush only for 404 Dispenser

## GUMMED TAPE DISPENSER

- Stainless steel construction
- Easy to fill water container
- 10½" 1 x 2" w



TD31250 .. Stainless Steel Tape Dispenser

## GUMMED TAPE

- 1" white gummed tape
- "Gummed side out"
- 35 lb./500 ft. roll



GT500 ..... Single Roll  
GT50030 ..... 1 Case (30 rolls) \$\$

## "SAFE HANDLING" GUMMED TAPE

For Meat and Poultry. Dimensions: 4½" x 1½"



SHT20 ..... 1 Case (20 rolls/500 ft. per roll)

## "SAFE HANDLING" LABELS

For Meat and Poultry. Dimensions: 2" x 1¼"



SHL12 ..... 1 Case (12 rolls/1000 labels per roll)