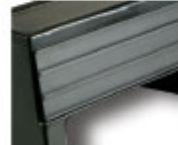


- One piece ABS construction
- No joints to break under increased weight
- Reverse facing triple price code channel to help employees keep things organized and items priced accurately
- Large storage area
- Mix and match 2 step and 3 step

BULK FOOD RISERS



TWO STEP ZIG ZAG RISER

MRB2425217 24" x 25" x 12"

THREE STEP ZIG ZAG RISER

MRB2425317 24" x 25" x 12"



MEAT/DELI RISER

- "J" channel in front for price tags
- Angled front prominently displays your choice meats
- Top shelf section accommodates trays or smaller bulk items



MRB2430917 24" x 30" x 9"



CHEESE RISER

- Unopened cheese packs can be displayed with label facing customer
- Additional display on top for opened or unopened pack
- "J" channel in front for price tags



CRB2430917 24" x 30" x 9"



RISER WITH TIERED BACK

- Display two rows of choice meat and cheese loaves
- Unique front spacer tabs promote consistent cool air movement
- Top shelf section accommodates trays or smaller bulk items

space tab

MRB24301117 24" x 30" x 11"



STEP UP RISER

Material: ABS Color: Black

TWO TIERED

SU2430217 24" x 30" x 3" back
 SU2434217 24" x 34" x 3" back



THREE TIERED

SU2430317 24" x 30" x 4½" back
 SU2434317 24" x 34" x 4½" back



**santa fe™
step-up riser**

- Solid steel construction with protective coating
- Flat sheet shelves are interchangeable and removable for cleaning
- Use with any color or shape of display bowls and trays

SU24302SF17 24" x 30" x 4"

SHAVED MEAT RISERS

ABS material



Item Number	Dimensions	Description
MR30617	...30" x 6" x 3½" Solid Back
MR30617	...30" x 6" x 3½" Tiered Back

MEAT & SEAFOOD RISER

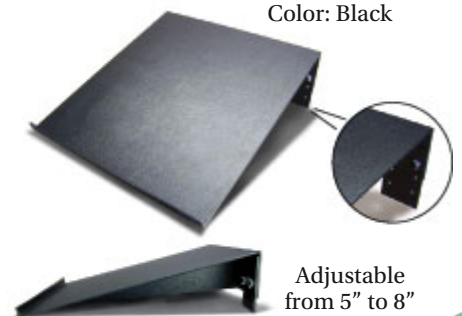
- Unbreakable tough ABS material
- High profile front lip holds heavy loaded trays in place



SLR243017 28½" x 23¼" x 8½"

SLANT RISER

Tough ABS plastic
Color: Black



Adjustable
from 5" to 8"

RR2430SL17 24" x 29" x 5"- 8"