

# PRODUCE DEPARTMENT



## WICKER DISPLAY BASKETS

Washable "Poly-Line"

- Helps to arrange and organize your display
- Made of washable synthetic material

### GREEN



BAGR16113	.....	16" X 11" X 3"
BAGR18114	.....	18" X 11½" X 4"

### BLACK



BABLK18114	.....	18" x 12" x 4"
BABLK16113	.....	16" x 11" x 3"
BABLK14103	.....	14" x 10" x 3"
BABLK1073	.....	10" x 7½" x 3"

## WATERING MACHINE

Simplify watering. Protects your produce and floral quality. Eliminate the hazards of lugging open buckets and dragging hoses. Ruggedly built, welded steel, powder coated frame.

How the WaterBoy works:

Normal water pressure will charge the unique tank. Quickly connects and disconnects from any water source and automatically shuts off when tank is full.

- 20" d x 20" w x 40" h
- Tank Size: 20 Gallons
- 15-16 gallons of usable water
- 12' SuperFlex Hose
- Filling Time: 3-4 minutes
- Deluxe Wand with Extendo-Flex No-Drip-Tip



<b>WBM16B</b>	.....	16 Gallon Watering Machine
---------------	-------	----------------------------

Other sizes from 7 gallons to 26 gallons available



96

## PRODUCE CASE LINERS

### PLASTIC NETTING

This is an economical and colorful way to prevent product damage while protecting your display case. Can be used in one continuous strip or easily cut into smaller pieces as needed. Fine mesh structure makes it easy to clean. Spillage or damaged produce can be washed off the non-absorbent netting.



Item Number	Capacity	Dimensions
<b>VG30</b>	..... Green	74' long x 30" wide
<b>VG36</b>	..... Green	62' long x 36" wide

### "SHUR-GRIP"

Shelf and display case non-skid case liner. Anchors product or display baskets to prevent sliding even at steep angles.

- Open mesh pattern allows ventilation
- Meets FDA sanitation guidelines
- Easy to clean - just vacuum or wash
- Can be easily cut into smaller lengths



Item Number	Capacity	Dimensions
<b>SGG36</b>	..... Green	60' long x 36" wide
<b>SGG48</b>	..... Green	60' long x 48" wide
<b>SGBK48</b>	..... Black	60' long x 48" wide

## PRODUCE DISPLAY MAT

### "RAFFIA" MATS

"Grass" mats available in green and black. Made of the finest raffia and burlap hemmed ends. Size: 72" x 39"



<b>GM78</b>	.....	Green Grass Mat
<b>GM78BK</b>	.....	Black Grass Mat

## PLASTIC DIVIDERS

Sanitary, attractive and durable, one piece plastic dividers



### WHITE WITH GREEN TIP

<b>TT730</b>	.....	.7" x 30"
<b>TT530</b>	.....	.5" x 30"
<b>TT330</b>	.....	.3" x 30"



### ALL GREEN

<b>AG730</b>	.....	.7" x 30"
<b>AG530</b>	.....	.5" x 30"
<b>AG330</b>	.....	.3" x 30"

## HANGING DIAL SCALES



### PRODUCE SCALE

Extra large dial reads from both sides. This scale features thermoplastic springs, an extra large dash pot and a perfectly balanced housing.

"Legal for Trade"

- 15" diameter recessed dial with stainless steel housing
- Dial chart: 10 lbs x 1 oz
- Capacity: 30 lbs (3 revolutions)
- 15" diameter stainless steel pan

T3530 ..... Hanging Dial Scale

### VENDOR SCALE



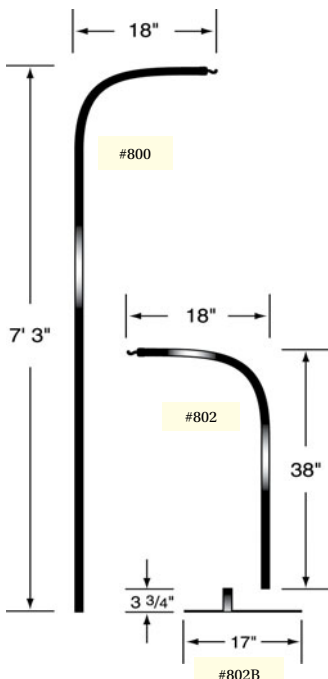
A hanging scale for virtually any commodity that has to be weighed. (i.e. natural bulk foods, produce or seafood)

- 8" diameter dial, white plastic housing
- Dial chart: 10 lbs. x 1 oz
- Capacity: 20 lbs. (2 revolutions)
- 12" diameter stainless steel pan with holes for drainage

MCS20F ..... Single Face  
MCS20FD .... Double Face (read from both sides)

### SCALE HANGERS

Constructed of 1 1/4" chrome plated tubing with heavy duty hooks. Mounting brackets furnished for easy installation.



800 ..... Single - (for One Scale)  
802 ..... "Shorty" - Designed to be mounted on top of display cases. May be used with 802B mounting base.  
802B ..... Mounting Base

## CUSTOMER PRODUCE SCALES

Economical compact scale for pre-weighing in the produce department. Place in sales area for customer's convenience.



LCD4002SBA



LCD4002BA

- Choice of stainless steel or baked enamel bodies
- Capacity: 40 lbs x 2 oz
- Overall dimensions: 9 3/4" x 6 3/4" x 12 1/4" high
- 10 3/4" diameter x 2" stainless steel receiving bowl
- Temperature compensated springs
- Coated steel parts and chassis for corrosion resistance

LCD4002SBA ..... Produce Scale, Stainless Housing  
LCD4002BA ..... Produce Scale, Enamel Housing

## VINYL LOOP FLOOR MATS & RUNNERS



Loop pile channels dirt and moisture deep into nap. Great for heavy traffic areas such as runners for produce department, etc. Vinyl backing keeps mat in place.

- Material - vinyl coated nylon loop pile bonded to a non-stop vinyl backing and border
- Choice: single mats or continuous runners
- Color: Forest Green or Gray

### SINGLE MATS

VL3648 ..... 36" x 48" Floor Mat  
VL3660 ..... 36" x 60" Floor Mat  
VL3672 ..... 36" x 72" Floor Mat  
VL4872 ..... 48" x 72" Floor Mat  
VL4896 ..... 48" x 96" Floor Mat

### CONTINUOUS RUNNERS

Borders on 4 Sides  
VL36288 ..... 36" x 24' Continuous Runner  
VL48288 ..... 48" x 24' Continuous Runner

Please specify color when ordering

We Gladly Welcome



## BAG HOLDERS

### VERTICAL BAG HOLDERS

- Mounts on top edge of display cases, fruit bins, wooden cases, etc
- Pre-drilled mounting flange is welded to holder
- Will hold up to 2" wide poly bags
- Comes complete with twist-tie holder and screws
- Overall height: 23"
- Color: White



**VBH12** ..... Vertical Bag Holder  
Bags and twist ties sold separately.

- Free-standing scale and bag holder furnished with 14" diameter weighted base
- Overall height: 36"
- Color: Black



**VSBH36** ..... Vertical Scale and Poly Bag Holder  
Bags, twist ties and scale sold separately.

- Completely portable - can be placed anywhere that's convenient in your sales or display area
- Free-standing bag holder furnished with 14" diameter weighted base
- Will hold up to 14" wide poly bags
- Comes with twist-tie holder
- Overall height: 52"
- Color: Black



**VBH12FS** ..... Free-Standing Vertical Bag Holder  
Bags and twist ties sold separately.

### MOUNTED BAG HOLDERS

Ideal for mounting on display cases in produce, meat and bulk sales departments.



**BH1334WM** ..... Pole Bag Holder, Wall Mount, Acrylic



Holds rolls of poly bags up to 12" wide.  
**BH12L** ..... Top Mount Bag Holder



Holds rolls of poly bags up to 12" wide.  
**BH12S** ..... Front Mount Bag Holder

## VINYL APRONS

- Attractive kelly green especially for produce department
- USDA approved for use around food products
- Full cut bib and pencil pocket
- Waterproof - waist ties included
- Size: 31" x 39" long



### SOLID GREEN

**PAG1** ..... Single Apron

Quantity Discounts on 12 or more! **\$\$**

## OVAL DAY-GLO LABELS

- EP020GR ..... Fresh 1000 labels per roll
- EP091GR ..... Reduced Actual size shown: 1 3/8" x 1 3/16"
- EP407GR ..... Garden Fresh
- EP408GR ..... Produce Dept.
- EP094GR ..... Ripe
- EP328GR ..... Ready-To-Eat
- EP249GR ..... Organic
- EP409GR ..... Tasty



## SCOOPS

- Cast polished aluminum
- Molded grip handle
- Great for bulk food sales



Item Number	Capacity	Dimensions
<b>6016</b> .....	12 oz .....	3 1/4" x 6 1/4"
<b>6020</b> .....	24 oz .....	4" x 8"
<b>6023</b> .....	38 oz .....	4 3/4" x 9"
<b>6026</b> .....	58 oz .....	5 1/2" x 10 1/2"

## HEAVY DUTY TONGS

Provide a comfortable grip for your work staff and customers. Heat resistant handle is permanently bonded so it will not slip or peel. Scallop edges for firm grip.



**CCT9GR** ..... 9 1/2" Long  
**CCT12GR** ..... 12" Long

# PRODUCE DEPARTMENT

- Blades: Stain-free, high carbon steel, hand ground and honed.
- Handles: High-impact polypropylene textured and formed for slip-resistant grip.
- An impervious seal of blade and handle provides the utmost sanitary qualifications. NSF certified.



**S104G**..... 3 1/4" Utility Knife, Green  
**S186G**..... 6" Produce Knife, Green



## PRODUCE KNIVES SANI-SAFE



**S104** ..... 3 1/4" Utility Knife, White  
**S186** ..... 6" Produce Knife, White  
**S1128** ..... 8" Trimming Knife, White

## STAINLESS STEEL



Wood Handle, Stainless Steel Blade

**P1530**..... 3 1/2" Utility Knife



## VICTORINOX



Wood Handle, Stainless Steel Blade

**P5030**..... 12" Watermelon Knife

## CERAMIC COATED SHARPENER "IT'S UNBREAKABLE"

- Same characteristics as traditional solid ceramics
- Sharpen both smooth and scallop edges
- Easily cleaned with mild abrasive cleaner
- Green non-absorbent plastic handle



**CF10**..... 10" Sharpener

## COLOR CODED KNIVES

Imported stainless steel - Plastic color-coded handles.  
Ideal for HACCP knife program.

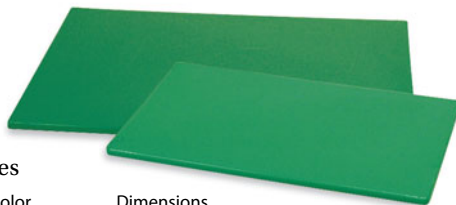


**KNBN6G** ..... 6" Curved Boning Knife, Green  
**KNBR8G** ..... 8" Breaking Knife, Green  
**KNST10G** ..... 10" Cimeter Steak Knife, Green

## COLOR CODED CUTTING BOARD

Textured poly cutting boards. Reversible boards are 1/2" thick. NSF listed - USDA approved. Will not crack or chip.

- Dishwasher safe
- Non-Absorbent
- Non-Toxic
- Stain Resistant
- Non-Porous
- Will not dull knives



Item Number	Color	Dimensions
<b>GTP1812</b> .....	Green	18" x 12" x 1/2"
<b>GTP2418</b> .....	Green	24" x 18" x 1/2"



Other colors available

Larger and special size **White** 5/8" thick cutting boards can be cut to order. Ideal for cutting, processing and preparation. Can be used on sink drain board since they are non-absorbent, odorless and tasteless.

## KNIFE RACK & TOOL HOLDER WITH GREEN POLY INSERT



- Mounts easily on worktable or wall
- Heavy duty stainless steel
- Removable green poly insert
- 6 slots for knives, 1 slot for sharpener
- Dimensions: 12" h x 14" w

Knives Sold Separately

**RAM14G** ..... Knife Rack with Green Insert

## PRODUCE TOOL HOLSTER

Leather tool holster will hold crate opener and one utility knife. Snap loop for fitting over belt. Size: 4 1/2" x 8".



**TH58**..... Tool Holster

## CRATE OPENER

Hardened and tempered from solid bar. 8" overall length.



**T28** ..... Crate Opener

## PRODUCE TOOL KIT

Kit includes one each: TH58 holster, P1530 utility knife and T28 crate opener.



**PTK3** ..... Produce Tool Kit

# PRODUCE DEPARTMENT

## CRISPING BASKETS



Makes cleaning, handling, processing and storing of vegetables fast and efficient. Greens, lettuce, celery, etc. can be removed from crate or box, washed, trimmed and placed in easy-to-clean crisping baskets. While in storage, ventilated design provides for faster cooling and better air circulation. Produce can be easily watered down.

- Injection molded high density poly
- FDA approved material
- Stacks securely when full - nests when not in use
- Size: 24" x 20" x 13" d

CB251711.....Crisping Baskets

## DOLLY FOR CRISPING BASKETS

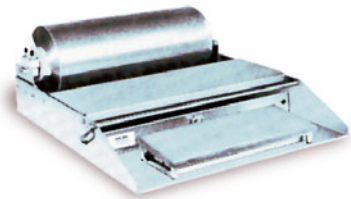


- Constructed of 1½" x 1½" heavy aluminum angle
- Size: 22" x 19"
- Four 5" heavy duty swivel casters

CBD2219..... Dolly only for Crisping Baskets

## WRAPPING STATIONS

Tough aluminum and stainless steel construction. Features all stainless wrapping surface for quick, easy clean-up. Solid state, controlled hot rod cutoff bar, film tension adjustment. Every wrapper is UL listed and USDA approved.



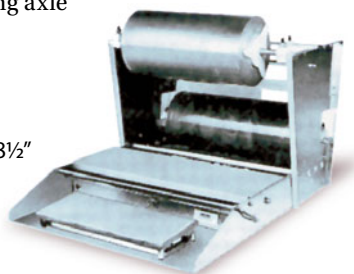
- One-Roll basic unit, with mounting axle
- 6" x 15" hot plate.

625A..... 22¼" x 29" x 5"

- Two-Roll model, with mounting axle
- 6" x 15" hot plate.

825A..... 22¼" x 29" x 18½"

Wrapper replacement parts on page 31.



100

## POLY LUGS

- High density, one piece injection molded polyurethane
- Smooth interior and wide radius corners for easy cleaning
- Nests when not in use
- Dimensions: 25" x 15½" x 8¾" d



Grooves on Bottom Allow for 90° Cross Stacking



PL25168GR .....Green

## JUMBO LUG

- USDA and NSF approved
- High density poly
- Nest when not in use
- Approximately 125 lbs capacity



Item Number	Description	Dimensions
PLG26.....	Gray Jumbo Lug	25" x 19" x 11"

PLG26C ..... Lug Cover for PLG26 (Jumbo Lug)  
Lug and cover sold separately.

## LUG CARTS

- Choice of single or double
- Rustproof 1" square aluminum tubing
- 5" swivel casters



ALLC1.....Single Lug Cart

ALLC2.....Double Lug Cart

## UTILITY STAND



- Welded aluminum stand with shelf and adjustable feet
- Fits all table model wrappers
- Can also be used as a utility table

50STAND..... 22½" x 22" x 31½"

## ZINC PLATED CARTS

### WET PRODUCE CART

- Heavy duty 1" tubing with handle
- Furnished with removable galvanized pan
- 42" x 26" x 30" platform height
- 5" heavy duty casters with vinyl bumper
- 800 lbs. load capacity



**G92460** ..... Wet Produce Cart

- Heavy duty 1" tubing
- Furnished with removable galvanized pan
- 44" x 25" x 30" platform height
- 5" heavy duty casters with vinyl bumper
- 800 lbs. load capacity



**WPC4425** ..... Wet Produce Cart

### DRY PRODUCE CART

- Heavy duty 1" tubing with solid shelves
- 42" x 20" x 30" platform height
- 5" heavy duty casters with vinyl bumper
- 800 lbs. load capacity



**G92437** ..... Dry Produce Cart  
Replacement Wheels: RPC515, PSC515

### STOCKING AND RECEIVING CART

- Constructed of 1" pipe
- 40" x 16" x 11" platform height
- Casters: Four 5" swivel with two 8" rigid wheels
- 1000 lbs. load capacity



**Z92315** ..... Stocking /Receiving Cart  
Replacement Wheels: TSC515, RW82

### DRY PRODUCE CART

- Heavy duty 1" tubing with solid shelves
- 36" x 18" x 29" platform height
- 5" heavy duty casters with vinyl bumper
- 800 lbs. load capacity



**G92402Z** ..... Dry Produce Cart  
Replacement Wheels: TSC515

### STOCKING AND RECEIVING CART

- Constructed of 1" pipe
- 52" x 18" x 11" platform height
- Casters: Four 5" swivel with two 8" rigid wheels
- 1400 lbs. load capacity



**Z92323** ..... Stocking /Receiving Cart  
Replacement Wheels: TSC515, RW82

## REPLACEMENT WHEELS AND CASTERS



**PSC515** ..... Swivel Plate Caster, 5" X 1 1/4" Wheel  
For Cart No: G92437

**RPC515** ..... Rigid Plate Caster, 5" X 1 1/4" Wheel  
For Cart No: G92437

**SSC515** ..... Swivel Stem Caster 5" x 1 1/4" Wheel, 1 3/16" Round Stem  
For Cart No: PC514GR & PC814GR

**TSC515** ..... Complete Threaded Stem Caster with 5" x 1 1/2" Wheel  
For Carts No: G92402Z, Z92315 and Z92323

**RW515** ..... 5" x 1 1/2" (Wheel only)  
For Carts No: G92402Z, Z92315 and Z92323

**RW82** ..... 8" x 2" Center (Wheel only)  
For Carts No: Z92315 and Z92323

## PRODUCE CARTS

### MOBILE PRODUCE MERCHANDISERS



- Excellent for displaying cut melons and other produce
- Cart will accept display baskets, platters and trays up to 13" wide x 30" long
- Simply wheel loaded cart from back room to sales area for a very mobile in-store display
- Constructed on tubular steel with green powder coat finish  
Furnished with heavy duty
- 5" swivel casters

Item Number	Description	Dimensions
<b>PC814GR</b>	8 Shelf Display Cart	33" x 15" x 68"h
<b>PC514GR</b>	5 Shelf Display Cart	33" x 15" x 43"h

Replacement Wheels: SSC515

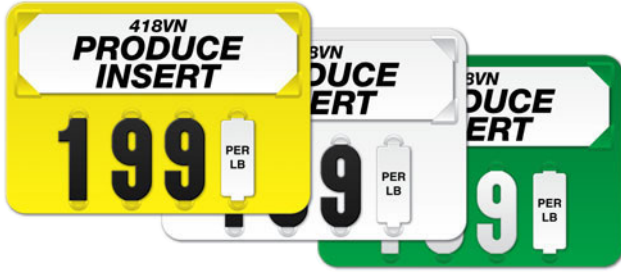
# PRODUCE DEPARTMENT

## "39" SERIES PRODUCE TAGS

All 39 Series Tags use 1½" Numbers and Designating Tabs

When ordering, please specify attachments needed to fit your application. See page 104 for attachments available. Attachments are sold separately and fastened to tags before shipping.

### SOLID COLOR "39"



#### 4 SLOT

Size: 5¾" wide x 4" high

- 394Y ..... Solid Yellow
- 394W ..... Solid White
- 394G ..... Solid Green

#### 5 SLOT

- 395Y ..... Solid Yellow
- 395W ..... Solid White
- 395G ..... Solid Green

Inserts, numbers and designating tabs sold separately. Black, red and blue solid color tags also available. Please call for details.

### BORDER ONLY "39"



#### 4 SLOT

Size: 6¼" wide x 4½" high

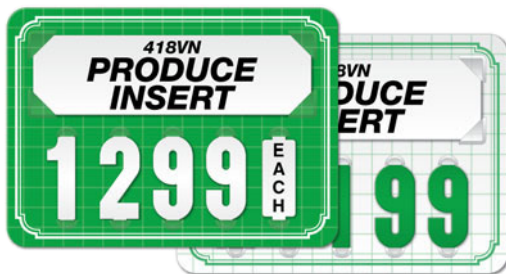
- 394BWG ..... White Tag with Green Border
- 394BGW ..... Green Tag with White Border

#### 5 SLOT

- 395BWG ..... White Tag with Green Border
- 395BGW ..... Green Tag with White Border

Inserts, numbers and designating tabs sold separately

### GRID & BORDER "39"



#### 4 SLOT

Size: 6¼" wide x 4½" high

- 394GBGW ..... Green Tag with White Grid/Border
- 394GBWG ..... White Tag with Green Grid/Border

#### 5 SLOT

- 395GBGW ..... Green Tag with White Grid/Border
- 395GBWG ..... White Tag with Green Grid/Border

Inserts, numbers and designating tabs sold separately

## FLAT CUT NUMBERS

Use with "39" Series. Fits 1½" number slots (25 per pack)

- 1511/2BKPK ..... Black
- 1511/2WPK ..... White
- 1511/2RPK ..... Bright Red
- 1511/2YPK ..... Yellow
- 1511/2GPK ..... Green
- 1511/2DRPK ..... Dark Red



Please specify quantities and numerals needed when ordering.

## DESIGNATING TABS

Use with "39" Series Produce Tags Reversible (printed on both sides). Black on white, 1½" high. (25 per pack). Fits 1½" number slot.

#### Combinations

- Per Lb/Lbs
- Doz/Per Doz
- Cada/Por
- Pkg/Per Pkg
- Each/For
- Por Lb/Libra
- Bun/Per Bun
- Bskt/Per Bskt

T1511/2PK ..... 1 Pkg. 1½" Tabs

Please specify quantities and numerals needed when ordering.



## STORAGE BOX

Translucent plastic with attached lid. For easy storage of inserts, numbers and designating tabs. Size: 11" x 6¼" x 1½"

T600 ..... Storage Box  
With (10) Removable Dividers



T600DP ..... Replacement dividers  
for T600 (8 per pack)



## STORAGE BOX

For price tags, numbers, designating tabs and inserts  
Designed specifically for produce department

- Tough ABS plastic
- No more rusty boxes
- No sharp edges
- Acrylic hinges

Top compartment: 14¼" x 10¾" x 10"d  
Lid support to hold lid open  
Includes: (4) #T600 Storage Boxes

Item Number ..... Size ..... Description  
PSB600 ..... 14¼" x 11¼" x 17¼" h ..... Storage Box



All 44 series tags use 3" numbers and tabs

## "44" SERIES PRODUCE TAGS

When ordering, please specify attachments needed to fit your application. See page 104 for attachments available. Attachments are sold separately and fastened to tags before shipping



Size: 8" wide x 6¼" high

	<b>SOLID COLOR "44"</b>
	<b>4 SLOT</b>
444W .....	Solid White
444G .....	Solid Green
444Y .....	Solid Yellow

Size: 10" wide x 6¼" high

	<b>5 SLOT</b>
445W .....	Solid White
445G .....	Solid Green
445Y .....	Solid Yellow

Inserts, numbers and designating tabs sold separately. Black, red and blue solid color tags also available. Please call for details.



### BORDER ONLY "44"

Size: 9" wide x 7" high

	<b>4 SLOT</b>
444BGW .....	Green Tag with White Border
444BWG .....	White Tag with Green Border

Size: 10¼" wide x 7" high

	<b>5 SLOT</b>
445BGW .....	Green Tag with White Border
445BWG .....	White Tag with Green Border

Inserts, numbers and designating tabs sold separately



### GRID & BORDER "44"

Size: 9" wide x 7" high

	<b>4 SLOT</b>
444GBWG .....	White Tag with Green Grid/Border
444GBGW .....	Green Tag with White Grid/Border

Size: 10¼" wide x 7" high

	<b>5 SLOT</b>
445GBWG .....	White Tag with Green Grid/Border
445GBGW .....	Green Tag with White Grid/Border

Inserts, numbers and designating tabs sold separately

## FLAT CUT NUMBERS



Use with "44" Series.  
Fits 3" number slots.  
(25 per pack)

303BKPK .....	Black
303WPK .....	White
303RPK .....	Bright Red
303YPK .....	Yellow
303GPK .....	Green

When ordering: specify quantities and numerals needed.

## DESIGNATING TABS



Use with "44" Series Produce Tags.  
Reversible - printed on both sides. Black on white.  
Fits 3" number slots. (25 per pack)

### Combinations

• Per Lb/Lbs	• Por Lb/Libra	• Each/For
• Cada/Por	• Box/Per Box	• Bun/Per Bun
• Pkg/Per Pkg	• Bskt/Per Bskt	• Bag/Per Bag

T303PK ..... 1 Pkg. 3" Tabs

When ordering: specify quantities and combinations needed.

## ORGANIC SLIDER



Printed on both sides, allowing it to be inserted from either the left or right side.

Green/Yellow/White/Black on Clear (12 Per Pack)  
Size: 2¾" x 1¾"

ORGLDR12.....Organic Slider



## "TODAY'S SPECIAL" ARROW

Accepts our standard 418 product name inserts and 3" numbers or tabs.

Item Number	Size	Colors
TS810W .....	8¾" X 10"	Red and White

Please specify attachments needed (see page 104). Attachments, tags, numbers, inserts and designating tabs sold separately.

# PRODUCE DEPARTMENT

## PRODUCT NAME INSERTS

Color: Black on white Actual size: 5¼" x 1½"

Name inserts are interchangeable with all tags listed on pages 102 & 103. See our website for an order form/list with all names available.



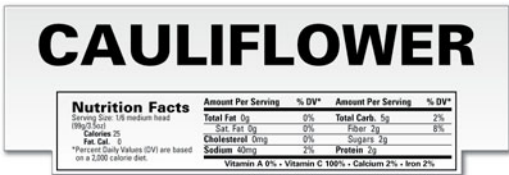
418VN .....English Product Name Insert

Over 800 Inserts to Choose From

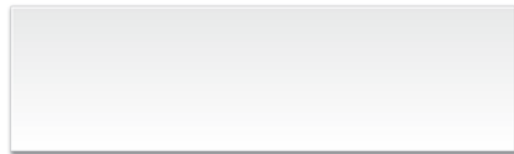


5418 .....English/Spanish Product Name Insert

Over 400 Bilingual Inserts to Choose From



419NP .....Nutritional information inserts  
FDA approved data when available. If FDA approved data does not yet exist, PMA values have been selected. Limited selection available.



418VNB25 ..... Insert Blanks  
Use with marking pen or P-Touch system. Sold in packs of (25)  
Color: White

## PRODUCE TAG HANGERS & ATTACHMENTS

- All tags illustrated are sold without hangers or attachments
- When shipped, attachments are fastened to tag ready to use
- When ordering, please specify optional hangers/attachments
- Additional charge for attachments only required



RH FH

RH ..... Regular back hangers  
FH ..... Regular front hangers



HDB HDF

HDB .. Heavy duty back hangers  
HDF .. Heavy duty front hangers



SCA..... Snap clip attachments  
(for 1¼" moulding)



MM06A .....Magnetic strips

## TAG/SIGN HOLDERS

Clear vinyl with colored background. Supplied with 2 strong self adhesive strips on back. Can be mounted anywhere. Ideal for front of service cases or any department where dry storage display racks are used. Will keep signs clean and dry. Easily cut to shorter lengths. Tag fits securely in "J" channel protected by one piece clear overlay.



Height	Length	Green	Black	Red	Blue	Clear
5"	48"	SHCV5G	SHCV5BLK	SHCV5R	SHCV5B	SHCV5C
6"	48"	SHCV6G	SHCV6BLK	SHCV6R	SHCV6B	SHCV6C
7"	48"	SHCV7G	SHCV7BLK	SHCV7R	SHCV7B	SHCV7C
8"	48"	SHCV8G	SHCV8BLK	SHCV8R	SHCV8B	SHCV8C

## TRACK SIGN HOLDER

Track sign holders can be used with our solid color 39 style tags. Tag will fit directly into the c-channel or other sizes may be used in conjunction with an SCA clip attached (shown above). See page 102-103, 141 for tags.



TSH748 ..... 48" x 6½"

