

PAPER CUTTERS

Can be table mounted or hung under counter

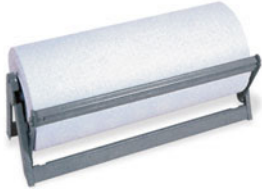


Use with 18" wide paper.

PC18 Paper Cutter

ECONOMY PAPER CUTTERS

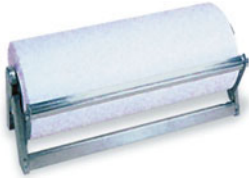
Can be mounted on wall, countertop or under counter.



50018 For 18" wide paper

STAINLESS STEEL PAPER CUTTERS

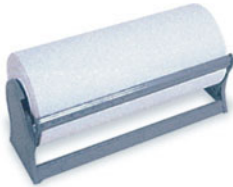
All stainless steel construction. This cutter was specially designed for use in food processing, fast food, meat, poultry and other markets where rust-free, sanitary dispensing is desired. Can be mounted on wall, counter top or under counter.



SS50218 Paper Cutter for 18" wide paper
SS50224 Paper Cutter for 24" wide paper

DELUXE PAPER CUTTERS

Features solid end brackets for added strength. Can be mounted on wall, countertop or under counter.



A52015 15"
A52018 18"
A52020 20"
A52024 24"
A52030 30"
A52036 36"

FILM/FOIL CUTTERS

Features serrated blades. Same solid construction as A520 series above.

A52718 Film/Foil Cutter for 18" width roll

FAT ANALYZER

Measures the fat content of ground beef. A fast and simple way used by supermarkets to accurately label their ground beef and comply with USDA standards. It features a 3 minute cycle time and works on standard electric current, (115/60/1). Comes complete and ready to use with carrying case, glass vials, cord and plug.



Overall Dimensions: 5½" x 5½" x 5½"

FA73 Fat Analyzer

REPLACEMENT PARTS

FACA1 Fat Analyzer
FAV1 1 pk. (3) glass vials

GUMMED TAPE DISPENSER

Handles gummed tape up to 1½" wide

Feed stop screw can be loosened to adjust measuring dial. Light attractive, cream colored.



404 "Tape Shooter" Lever Operated Dispenser



BR404 Brush only for 404 Dispenser

GUMMED TAPE DISPENSER

- Stainless steel construction
- Easy to fill water container
- 10½" l x 2" w



TD31250 Stainless Steel Tape Dispenser

REPLACEMENT BRUSH

TD31250 Foam Brush for TD31250 Dispenser

GUMMED TAPE

- 1" white gummed tape
- "Gummed side out"
- 35 lb./500 ft. roll



GT500 Single Roll
GT50030 1 Case (30 rolls) \$\$

"SAFE HANDLING" GUMMED TAPE

For Meat and Poultry. Dimensions: 4½" x 1"



SHT20 1 Case (20 rolls/500 ft. per roll)

"SAFE HANDLING" LABELS

For Meat and Poultry. Dimensions: 2" x 1½"



SHL12 1 Case (12 rolls/1000 labels per roll)

TOLL FREE: (800) 852-2806

