

New Mexican Style Flavors and Tasty Favorites SPECIALTY SEASONINGS



Sabores Parrillas
1942 Dean's



CARNE ASADA

SMCA12 12/4.5 oz Shakers
CASA10 10 lb. Carton
CASA25 25 lb. Carton



CHILE CON LIMÓN

SMCCL12 12/3.5 oz Shakers
CCL10 10 lb. Carton
CCL25 25 lb. Carton



PESCADO Y MARISCOS

SMLS12 12/4.25 oz Shakers
LS10 10 lb. Carton
LS25 25 lb. Carton



PICO DE GALLO

SMPDG12 12/4 oz Shakers
PDG10 10 lb. Carton
PDG25 25 lb. Carton



POLLO

SMBC12 12/4 oz Shakers
BPS10 10 lb. Carton
BPS25 25 lb. Carton



TEQUILA LIMÓN

SMTL12 12/3 oz Shakers
TL10 10 lb. Carton
TL25 25 lb. Carton

CARNE ADOVADA MEXICAN SAUCE FOR MEAT

Complete ready-to-use blend. Dip thin cuts of pork, beef or chicken and allow to marinate a few hours.



CCCA2 2 gallon poly pail

PIMIENTA CON LIMÓN LEMON-PEPPER DRY SEASONING

Display in retail meat case. Garnish with lemon wedges or slices. Works especially well on beef ball tips and flap meat.



DLP10 10 lb. carton
DLP25 25 lb. carton

CARNE ASADA MEXICAN STYLE MARINADE

Marinate thin sliced pork or beef, boneless chicken breast, chicken thighs or leg quarters over night for best flavor.



CAM1 1 gallon poly jug
CAM4 1 case (4-1 gallon)



TOLL-FREE PHONE: (800) 852-2806 | **FAX:** (800) 774-8884 | **VISIT OUR WEBSITE:** www.southbayabrams.com
SHOWROOM ADDRESS: 15662 Producer Lane Huntington Beach, CA 92649 | **HOURS OF OPERATION:** 7:30 A.M. - 3:30 P.M.



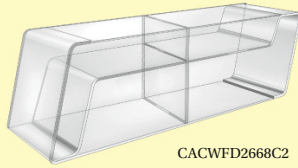
MEAT DEPARTMENT PRODUCTS

REVERSIBLE DISPLAY BOXES

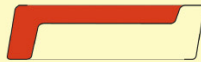
Acrylic display boxes with a drop-front design. This new design is completely reversible, replacing the need to use a dummy tray during times with a lower sales volume.



CACWFD2688



CACWFD2668C2

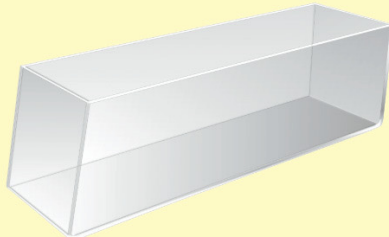


Low Customer Volume Display High Customer Volume Display

CACWFD2668	26" x 6" x 7½"
CACWFD2688	26" x 8" x 7½"
CACWFD26108	26" x 10" x 7½"
CACWFD2668C2	26" x 6" x 7½"

CLEAR DISPLAY BOXES

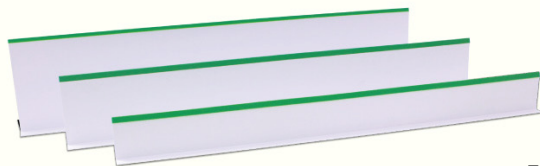
For larger bulk displays of marinated meats



CAC3086 28" x 8" x 6"

PLASTIC DIVIDERS

Sanitary, attractive and durable, one piece plastic dividers



TT730	7" x 30"
TT530	5" x 30"
TT330	3" x 30"

POLY LUGS

- High density, one piece injection molded polyurethane
- Smooth interior and wide radius corners for easy cleaning
- Nests when not in use
- USDA Accepted
- Dimensions: 25" x 15½" x 8¾"



Grooves on bottom allow for 90° cross stacking

PL25168G Gray

Other colors available. Call Customer Service or see our website for more details.

BANDSAW BLADES

A heavy duty, top quality blade that stands up to demands of large volume, heavy duty, high speed cutting operations. Gives you a straight, sharp cut for better product appearance. Impulse hardened tips, individually filed teeth and unconditionally guaranteed welds.

322H112	112" Blade
322H126	126" Blade
322H142	142" Blade



INDUSTRIAL BOOTS

- Excellent in wet, muddy conditions where chemical resistance is not a priority
- 16" with safety toe
- All black with "Bar Cleat" sole
- PVC injection molded with high molecular weight PVC compound
- Net lined for easy on and off



PVCB04601607	size 7	PVCB04601611	size 11
PVCB04601608	size 8	PVCB04601612	size 12
PVCB04601609	size 9	PVCB04601613	size 13
PVCB04601610	size 10		

FOOD EQUIPMENT OIL

Lubricates and protects food machinery and parts. Use on meat saws, grinders and choppers, slicers, tenderizers, patty machines, etc. Simply spray all food machinery after cleaning and it makes your next clean up job fast and easy.



LO128	1 Gallon
LO1284	1 Case (4/1 gal.) \$\$

"CUCHILLO CECINA" SLICING KNIVES



KNSL16	16" Blade
KNSL18	18" Blade
KNSL20	20" Blade

GRANTON EDGE SLICING KNIVES

A Granton edge has hollowed grooves on the sides of the blade. These grooves fill with the fat and juices of the product being sliced, which allows for thin, even cuts without tearing or shredding the meat.



40645 12" Semi-Flex Blade

